

9. Construction Activities

**DIABLO WATER DISTRICT
STANDARD SPECIFICATIONS AND DRAWINGS**

CONSTRUCTION ACTIVITIES

- I. Construction Sequence and Requirements
- II. Construction Submittal Checklist

**DIABLO WATER DISTRICT
625-2112**

Sequence and Specifications to Work on DWD Facilities but Not
Limited to the Following:

1. Before the start of a Job or Subdivision:
 - a) Agreement in place.
 - b) Insurance in place.
 - c) Contractor to be approved by DWD.
 - d) 4 sets fully signed plans.
 - e) Phone Numbers – day time & emergency (after hours):
 - 1) Foreman and/or Superintendent
 - 2) Safety Officer
 - 3) Any other needed to complete job.
 - f) Safety officer is on location at all times.
 - g) Cathodic soils test results.
 - h) Cathodic plans and design – if needed.
 - i) All submittals complete.
 - j) All materials checked on location by the contractor.
 - 1) After materials have been received and checked by the contractor, the contractor shall notify DWD representative that the proper materials have been delivered. DWD representative will inspect the same at earliest convenience.
 - k) Spec book, plans, and approved submittals shall be on location at all times.
 - l) All services hand tapped (no power drills).
 - m) Joint Trench under or re-routed around water utilities, inform Inspector of any problems.

- n) Diablo Water District must receive written request to work outside of Diablo Water District's regular work hours Monday – Friday, 8:00 a.m. – 4:30 p.m. Requests will be received no later than Wednesday @ 4:30 p.m. for work on Saturday – no holiday work or 3 day weekend work is allowed. Please fax your request to Paul Urenda at 625-1803.

2. Testing sequence after jumper is installed and tested.

- a) 1st pressure test – before rock and after sufficient backfill (as determined by DWD employee).
- b) 2nd pressure test – after rock (90%), curb & gutter & sidewalks poured, services cut down, boxes installed (on 2 x 4 redwood).
- c) Final lift of paving shall occur after 2nd pressure test.
- d) Bacteria testing (no coliforms and < 50 background). See Section 02675 of DWD Standard Specifications.
 - 1) Cl2 (50 ppm) in system min. of 24 hours – (best 48+ hours).
 - 2) Flush – (min. 24 hours set time after flush).
 - 3) Bacteria samples taken (approx. 24 hours before results are available).

3. After bacteria test passes:

- a) Install meter(s) before any tie-ins are made or be in the process of installation.
- b) Jumper and/or plates to be pulled within 14 days or new bacteria samples to be taken.
- c) House services can now be connected.
- d) Tamper tags to be installed by Contractor/Developer.
- e) Tie-in bacteria test will be taken.

4. Before job acceptance:
 - a) Job must be completed.
 - b) As-built plan Mylars to DWD (suggest blue line as-builts first).
 - c) Cathodic if needed:
 - 1) Tested and certified by registered engineer.
 - 2) As-built Mylars (suggest blue lines first).
5. DWD will asses a time frame for all punch list items to be completed. If not completed at designated time, the District will do so or have done by others after contacting the bonding company.

DWD will increase the deposit to cover the estimated punch list items. The deposit shall be refunded if the punch list is completed to the District's satisfaction within the stated time frame.

DIABLO WATER DISTRICT MASTER SUBMITTAL LOG
PLEASE SKIP NUMBERS THAT DO NOT APPLY

SUBDIVISION OR PROJECT: _____

ACTION SUMMARY:

- A: No exceptions taken. OK to use product.
- B: Make corrections noted. Can use product provided comments are followed.
- C: Revise and Resubmit. Do not use product until further information is provided.
- D: Rejected. Do not use product. Submit on different product.
- E: Submittal required but not received from Contractor.

SUBMITTAL NUMBER	SPECIFICATION	DRAWING	DESCRIPTION	RECEIVED BY DWD	RETURNED TO CONTRACTOR	ACTION
1	02231-2.01.A	DWD 5	Bore and Jack Casing			
2	02231-2.01.D	DWD 5	Bore and Jack Insulators: Calpico Model W / Williamson M-2, stainless steel bands and hardware			
3	02512	DWD 6	Double Offset: Minimum I.D. shall be nominal			
4	02512	DWD 7	Single Offset: Minimum I.D. shall be nominal			
5	02610-2.01.A	--	Ductile Iron Pipe: U.S. Pipe / American Cast Iron / Clow			
6	02610-2.01.B	--	Flanged Coupling Adapters: Smith-Blair Type 913			
7	02610-2.01.B	--	Sleeve/Mechanical Couplings for Ductile Iron Pipe: Dresser 38 or 138, EPDM gaskets			
8	02610-2.01.B&C 02620-2.02.E	--	Push on Ductile Iron Pipe Fittings: Sigma / Tyler / Star			
9	02610-2.01.B&C 02620-2.02.E	--	MJ Ductile Iron Pipe Fittings: Star / Sigma / Tyler			
10	02610-2.01.B&C 02620-2.02.E	--	Flanged Ductile Iron Pipe Fittings: Sigma / Tyler / Star			
11	02610-2.01.C	--	Locking Joints for Ductile Iron Pipe: Field Lok 350 by U.S. Pipe			
12	02620-2.02.D	--	C900 PVC Pipe: JM / PW / Diamond			
13	02620-2.03.A	DWD 1	No. 12 Copper Detection Wire: Solid with blue insulation			
14	02620-2.03.B	DWD 1	Plastic Warning Tape: Blue, minimum 2-inch			
15	02620-2.03.C	--	Sleeve/Mechanical Couplings for PVC Pipe: Dresser 253, long style, EPDM gaskets			

DIABLO WATER DISTRICT MASTER SUBMITTAL LOG
PLEASE SKIP NUMBERS THAT DO NOT APPLY

SUBDIVISION OR PROJECT: _____

ACTION SUMMARY:

- A: No exceptions taken. OK to use product.
- B: Make corrections noted. Can use product provided comments are followed.
- C: Revise and Resubmit. Do not use product until further information is provided.
- D: Rejected. Do not use product. Submit on different product.
- E: Submittal required but not received from Contractor.

SUBMITTAL NUMBER	SPECIFICATION	DRAWING	DESCRIPTION	RECEIVED BY DWD	RETURNED TO CONTRACTOR	ACTION
16	02675	--	Disinfection Test Plan			
17	02830-Part 2	DWD 14	Fence Materials			
18	15100-2.03.E	DWD 15 DWD 17	Gate Valves: Mueller with stainless steel trim and hardware			
19	15100-2.04.J	DWD 19	Butterfly Valves: Mueller Lineseal XP Class 250, holiday free certified with serial number			
20	15100-2.05.C	--	Ball Valves: Watts Series B-6000			
21	15100-2.06.A	--	Insulating Fittings: Watts Regulator Co.			
22	15100-2.07.A	DWD 15	Fire Hydrants: Clow 960			
23	15100-2.07.B	DWD 15	Hydrant Check Valve and Break Off Spool: Clow LB400			
24	15100-2.07.C	DWD 15	Ductile Iron Hydrant Bury: Sigma or South Bay			
25	15100-2.08.B	DWD 20	ARV: Crispin UL10 / Apco 143C			
26	15100-2.08.B	DWD 20	ARV Screen: Northtown Hytech stainless steel			
27	15100-2.08.B	DWD 20	Angle Valve for ARV: Mueller B-24258			
28	15100-2.08.B	DWD 20	ARV Concrete Box and Lid: Christy 830 with extension			
29	15100-2.09	DWD 21	Blowoff Piping and Fittings: Brass for 2"			
30	15100-2.09.D	DWD 21	Angle Valve for Blowoff: Mueller B-20200 for 2"			

DIABLO WATER DISTRICT MASTER SUBMITTAL LOG
PLEASE SKIP NUMBERS THAT DO NOT APPLY

SUBDIVISION OR PROJECT: _____

ACTION SUMMARY:

- A: No exceptions taken. OK to use product.
- B: Make corrections noted. Can use product provided comments are followed.
- C: Revise and Resubmit. Do not use product until further information is provided.
- D: Rejected. Do not use product. Submit on different product.
- E: Submittal required but not received from Contractor.

SUBMITTAL NUMBER	SPECIFICATION	DRAWING	DESCRIPTION	RECEIVED BY DWD	RETURNED TO CONTRACTOR	ACTION
31	15100-2.10.A	--	Dielectric Unions and Flange Unions: EpcO Inc.			
32	15100-2.10.D	--	Flanged Coupling Adapters: Dresser Style 127 or 128 / ITT / Baker, stainless steel hardware			
33	15100-2.10.E.4	--	MJ Joint Restraint: EBAA Iron Megalug Series 1100			
34	15100-2.10.E.2	--	Pipe Restraining Clamp Assemblies: Stellar Corporation			
35	15100-2.10.F	--	Flange Gaskets: Garlock Blue Guard 3000			
36	15100-2.10.F	--	Stainless Steel Bolts and Buts			
37	15100-2.10.F	--	Protective Tape Wrap: 10 Mil Tape			
38	15100-2.10.G	DWD 17	G5 Valve Boxes: Christy			
39	15100-2.10.G	DWD 17	G12 Valve Boxes: Christy			
40	15100-2.10.H	--	Tapping Sleeves: JCM 432, all stainless materials and hardware			
41	15400-2.01.A&B	DWD 8	Copper Service Piping: Type K Soft, Mueller Streamline			
42	--	--	Copper Service Line Poly Wrap: Blue			
43	15400-2.01.C	DWD 8	Service Saddles for PVC Pipe: Mueller, cc thread, bronze, wide band			
44	15400-2.01.C	DWD 8	Service Saddles for Ductile Iron Pipe: Mueller BR2B or Apac 113, cc thread. Wrap DIP w/ 10 Mil tape at saddle.			
45	15400-2.02.A	DWD 8	5/8" - 2" Flow Meter: Sensus SR TRPL flow meter (CF) with 520R-MXU (single port per meter)			

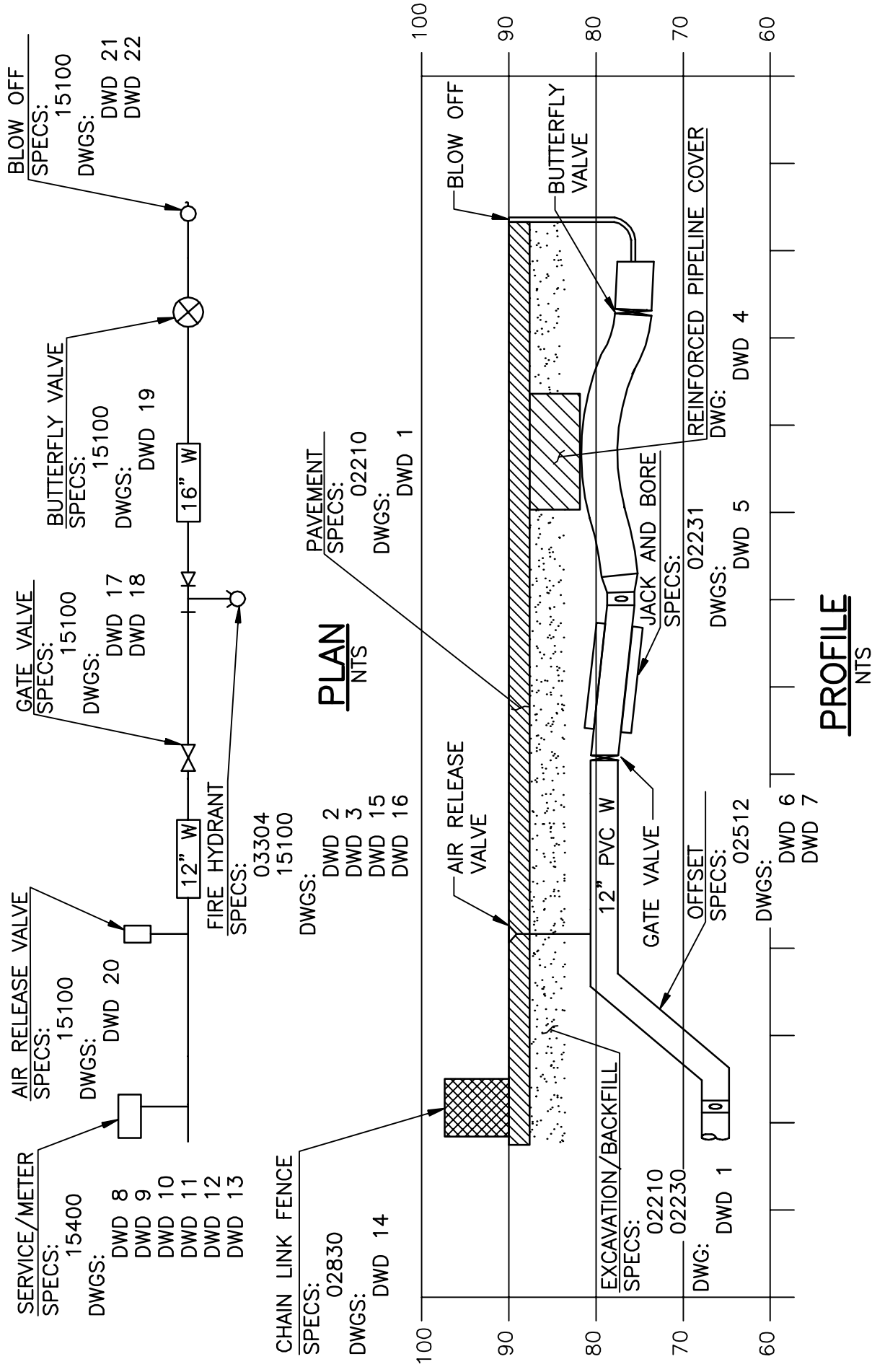
DIABLO WATER DISTRICT MASTER SUBMITTAL LOG
PLEASE SKIP NUMBERS THAT DO NOT APPLY

SUBDIVISION OR PROJECT: _____

ACTION SUMMARY:

- A: No exceptions taken. OK to use product.
- B: Make corrections noted. Can use product provided comments are followed.
- C: Revise and Resubmit. Do not use product until further information is provided.
- D: Rejected. Do not use product. Submit on different product.
- E: Submittal required but not received from Contractor.

SUBMITTAL NUMBER	SPECIFICATION	DRAWING	DESCRIPTION	RECEIVED BY DWD	RETURNED TO CONTRACTOR	ACTION
46	15400-2.02.B	DWD 8	3" & 4" Flow Meter Sensus SRH TRPL compound meter (CF) with 520R-MXU (single port per meter)			
47	--	DWD 8	Quarter Bend at Water Meter: Mueller H-10892			
48	15400-2.03	DWD 8 DWD 9 DWD 10	Meter Boxes: Christy B-12, B-16, B-30, B-40, or B-44			
49	15400-2.03.B	DWD 8 DWD 20	1" Angle Meter Stops: Mueller B-24258			
50	15400-2.03.B	DWD 8	1-1/2" - 2" Angle Meter Stops: Mueller B-24276			
51	15400-2.04	DWD 8	1-1/2" - 2" Corporation Stops: Mueller B-25008			
52	15400-2.05.B	DWD 10	3/4" - 2" Double Check Valve: Febco 850U			
53	15400-2.05.C	DWD 11	3/4" - 2" Reduced Pressure Backflow Preventer: Febco 825YA RP with ball valves			
54	15400-2.05.C	--	Reduced Pressure Backflow Fittings: Brass			
55	15400-2.05.C	DWD 11	Backflow Cage: BPDJ Guardshack one-piece enclosure			
56	15400-2.05.C	DWD 12	2-1/2" - 10" Reduced Pressure Backflow Preventer: Febco 880V N-shape w/Setter			
57	15400-2.05.D	DWD 13	3" - 10" Double Check Detector Valve: Febco 876V N-shape w/Setter			
58	16640-1.03 to 1.05	--	Corrosion Control Design After Rough Grading			
59	16640-Part 2	DWD C1- DWD C29	Corrosion Control Products			
60	--	--	Bitumastic			



STANDARD DRAWING	
QUICK REFERENCE GUIDE	
DESIGNED <u>WDB</u>	DRAWN <u>CCW</u>
APPROVED <u>MY</u>	DATE <u>JUNE, 2007</u>
DWG. NO. <u>DWD 0</u>	